



REMASTONE

DIY GUIDE: HOW TO LAY PAVERS

IMPORTANT SAFETY TIPS:

Always wear eye protection when you're cutting pavers.

Eye protection must be worn when using a compactor.

Always consult your hire centre about the safe operation of any power equipment.

STEP 1 - Clear your site: Clear the area to be paved and remove any plants and roots.



Scrape the area flat with a shovel.

STEP 2 - Add your bedding layer: Spread a layer of "Paving or Bricks" sand at a thickness of around 40mm. Rake the sand around the area to achieve even level of distribution.



For best result use a long straight float to screed the sand and level it.

STEP 3 - Use a plate compactor to compact the ground. Repeat this several times until the sand is firm.



STEP 4 - Final Screenshot: In this step you will use 2 pieces of flat bar and a long spirit level. Working from a point closest to the house set your level so the paving slopes away from the house and towards your lawn or garden for the rainwater run off.

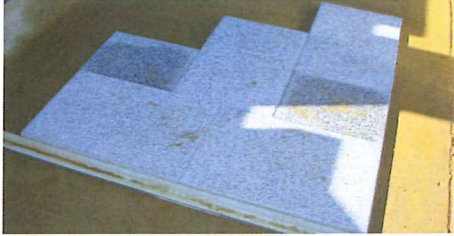


STEP 5 - Slide your straight edge on top of the flat bars and drag the excess sand back.



Make sure you fill any holes created by this step using the excess sand. This will be your final bed before paving.

STEP 6 - Setup a string line to make sure your work is square. Then carefully place your first row of pavers in position. Make sure that the pavers are straight.



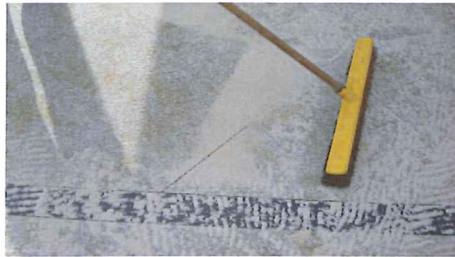
Keep laying your pavers in your chosen pattern, making sure you use the blade of a towel to achieve a consistent space between the pavers "for jointing sand". Also use a rubber mullet to tap the pavers down and achieve a nice flush finish.

STEP 7 - Cutting: To finish the job you will need to use a diamond brick saw to cut the pavers and fill any areas with part pavers. Always mark the pavers that need to be cut prior to cutting.



Please wear earmuffs and safety glasses when using the brick saw. Always follow the safety instructions for brick saws. Refer to your hire centre for safety requirements.

STEP 8 - Jointing sand: Spread some white washed sand around the paved area. Allow the sand to dry and then sweep it around a few times to let the sand fill the gaps between the pavers. Use the plate compactor again, fitted with a piece of carpet to compact the pavers while the jointing sand is still spread on top the pavers. Sweep away any excess sand.



Tip: to avoid any movement in the paving it is best to concrete in the edges of the paved area.

STEP 9 - Seal your pavers: Recommended but not compulsory. Sealing your pavers will reduce the chance of permanent staining and improves the final look of your paving.
