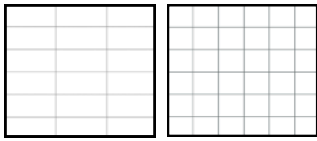
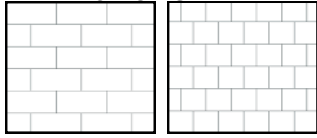


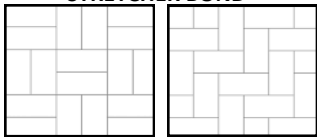
HOW TO LAY PAVERS



STACKBOND



STRETCHER BOND



BASKETWEAVE HERRINGBONE

Checklist

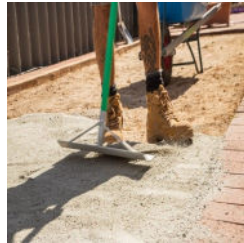
- Garden Gloves
- Eye Protection
- Spade
- Rubber Mallet
- Spirit level
- String line
- Cement
- 2 x Flat Bar
- Compactor
- Brick Saw
- Broom
- Small Trowel

Important Tips

- Always wear eye protection when cutting pavers and compacting
- Bend your knees when lifting heavy items
- Always wear protective clothing i.e. Safety boots and gloves
- Ensure to get council approval prior to commencement.
- To avoid any movement in the paving it is best to concrete in the edges of the paved area.
- **Recommended but not compulsory.** Sealing your pavers will reduce the chance of permanent staining and improves the final look of you paving.
- Natural stone product must be laid on Cracker Dust (recommended)

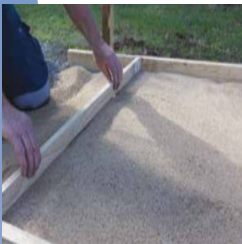
Step 1 | Clean your site

Clear area to be paved, remove any plants and roots, then scrape the area flat with a shovel.



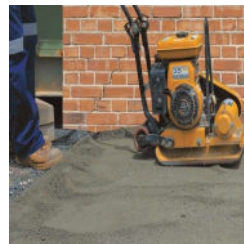
Step 2 | Add a bedding layer

Spread a layer of **cracker dust** (recommended) at a thickness of around 50mm. Rake the **cracker dust** around the area to achieve an even level.



Step 3 | Compact

Wet compact the surface 2-3 times ensuring the **cracker dust** is firm before continuing to the next step. After compaction is complete, Proceed to do the final screed making sure you have a levelled surface.



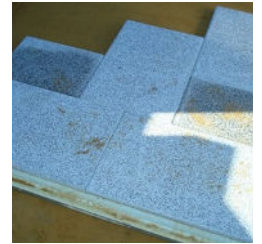
Step 4 | Final Screed

In this step you will use 2 pieces of flat bar and a long spirit level. Working from a point closest to the house, set your level so the paving slopes away from the house and towards your lawn or garden . Slide your straight edge on top of the flat bar and drag the excess sand back make sure you fill any holes created by this step with sand. This will be your final bed before paving.



Step 5 | Set up a string line

Ensuring that your work is level and square, carefully place your first row of pavers in position. Keep laying your pavers in your chosen pattern, making sure your use the blade of a trowel to achieve a consistent space between the paves "for jointing sand". Also use a rubber mallet to tap the pavers down to achieve a level finish.



Step 6 | Cutting

To finish the job you will need to use a diamond brick saw to cut the pavers and fill any areas with part pavers. Always mark the pavers that need to be cut prior to cutting.



Step 7 | Jointing Sand

Spread some **Jointing sand** around the paved area. Allow the sand to dry then sweep it around a few times to let the sand fill the gaps between the pavers. Sweep away any excess sand. (Follow instructions on the bag)

